



## Walker P7007 Bridge Navigational Watch Alarm System

The Walker P7007 Bridge Navigational Watch Alarm System (BNWAS) combines the very latest in Bridge Watch Alarm System technology with the ease and functionality of the new integrated touch sensitive display. This compact, user friendly unit not only complies to meet the new IMO's Maritime Safety Committee regulations mandatory on all marine vessels over 150 gross tonnage by July 2014. It also grants the exceptional design, build quality and reliability of a company that has gained nearly 200 years experience in maritime engineering.



### Purpose and innovation

The purpose of this Bridge Navigational Watch Alarm System (BNWAS) is to monitor bridge activity and detect operator disability which potentially could lead to marine accidents.

The awareness of the Officer of the Watch (OOW) is monitored through an alarm reset or motion detector and the BNWAS automatically alerts the Master or other qualified OOW if the original OOW becomes incapacitated and unable to perform their duties.

### Main Features

- A compact and stylish user friendly unit.
- Easily installed and incorporated into an established bridge system.
- Emergency call and remote reset facilities.
- Integrated motion sensor.
- Integrated back up battery pack in case of mains power failure.
- Visual and audio alarms that can be placed anywhere onboard.
- Display dimmer control.
- Unique touch menu display.
- Timed dormant countdown between 3-12 minutes.
- Multiple remote reset options.
- Key Switch operation.
- Variable alarm tone and volume.

# Walker P7007 Bridge Navigational Watch Alarm System



## Walker P7008 BNWAS Remote Rest / Repeater Unit

Lilley and Gillie Limited introduce the newly developed Bridge Navigational Watch Alarm System Remote Reset / Repeater Unit, Walker P7008.

The compact and attractive remote reset unit accompanies the main BNWAS unit system creating versatility and additional safeguards for the whole system.

The unit mimics the main reset function of the main BNWAS unit and incorporates the unique touch sensitive buttons, compact digital display and individual dimmer buttons on each specific unit.

Another additional feature is the built in motion sensor giving the unit the flexibility of acting as a remote sensor unit as well as a reset.

## Alert Periods

### Dormant Period

The alarm shall remain dormant for a period of between 3 and 12 minutes. At the end of this period, the alarm system shall initiate a visual indication on the bridge.

### First Stage Bridge Audible Alarm

If not reset, the Lilley and Gillie BNWAS Walker P7007 sounds a first stage audible alarm on the bridge 15 seconds after the visual indication is initiated.

### Second Stage Remote Audible Alarm

If not reset, the Lilley and Gillie BNWAS Walker P7007 sounds a second stage remote audible alarm in the back-up officers and/or Master's location 15 seconds after the first stage audible alarm is initiated.

### Third Stage Remote Audible Alarm

If not reset, the Lilley and Gillie BNWAS Walker P7007, sounds a third stage remote audible alarm at the locations of further crew members capable of taking corrective actions 90 seconds after the second stage remote audible alarm is initiated.

## Specifications

### Display/Control

Digital: 1 x 256\*64 pixel  
OLED Graphic display  
Illumination dimmable by  
2 x integral touch switches  
4 x "secret till lit" integral  
touch switches, accessed by  
key switch, for setup  
procedures. Integral "Alarm  
Reset" touch switch for OOW  
operation/PIR sensor for  
automatic monitoring of OOW  
movement.

### Standards

IEC 62616: 2010  
IEC 61162-1: 2008  
IEC 62288: 2008

### Mechanical

Din 43700 Pattern: Din 196 x  
144  
Weight- BNWAS Unit 1.18 Kg  
approx  
BNWAS Remote: 0.23 Kg  
approx  
Case: Plastic  
Outer Bezel: Polycarbonate;  
black  
Front Window: Ally Carbonate:  
Printed  
Case Back: Aluminium Alloy  
Panel / Console mounting.

RJ45 Connectors for Remote  
Reset / Repeater connection.

### Terminals:

4 x dry contact / 5VDC inputs:  
for 2 x remote resets / 1 x  
unacknowledged alarm / 1 x  
emergency call.

### Parameters

Timed "dormant" countdown  
(3 to 12 minutes)  
15 second visual alarm.  
15 second 1st Stage audible  
alarm  
2nd Stage audible alarm  
3rd Stage audible alarm  
"Power Fail" alarm  
Emergency Call function.  
Settable by key switch / menu  
access.  
Display of active timer.

4 x dry contact / 12VDC  
outputs:  
for visual alarm / 1st stage  
audio alarm / 2nd stage audio  
alarm / 3rd stage audio alarm.

Power Fail: N.C. (O.C. on fail)  
and Changeover outputs.

2 x IEC 61162-1 NMEA 0183  
inputs  
2 x IEC 61162-1 NMEA 0183  
outputs

### Communication format

RS422

### Input format

NMEA 0183 (HTC / HTD /  
VBW / VHW / VTG / EVE)

### Output format

NMEA 0183 (ALR)

### Power requirement

110/230VAC 50 / 60 Hz

### Compass safe distance

Standard: 0.3m Steering: 0.3m

## Standard System

The basic BNWAS comprises;

- 1 x P7007 BNWAS Unit
- 1 x P7011 Stage 2 audio sounder
- 1 x P7012 Stage3 audio sounder
- 1 x P7010 emergency call unit

## Optional System Extras

The following units can be ordered  
separately to provide system expansion:

- Walker P7008 Remote Reset / Repeater  
BNWAS Unit (Maximum of 4)
- P7010 Emergency Call unit
- P7009 Remote Reset unit
- P7011 Stage 2 Audio Sounder
- P7012 Stage 3 Audio Sounder
- A suitable Junction Box (Shipyard supply)  
may be necessary in order to facilitate  
expansion of BNWAS.



BUREAU  
VERITAS

Type Approval Pending

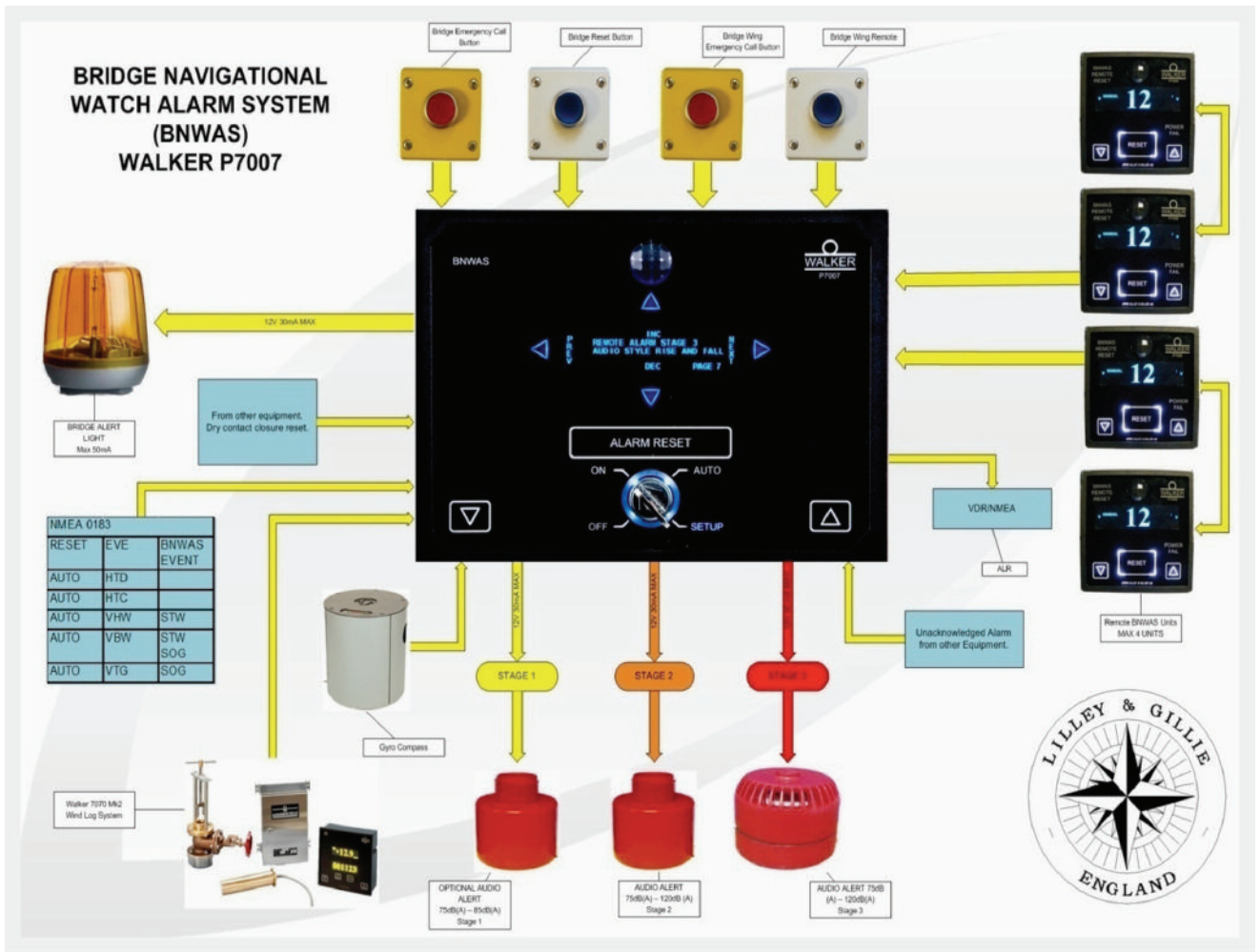


**LILLEY & GILLIE**  
EQUIPMENT

Directing International Shipping since 1812

# Walker P7007 Bridge Navigational Watch Alarm System

Functional diagram (Optional Extras Included)



In accordance with our policy of continuous development, changes may be made from time to time without prior notice.



Manufacturer of magnetic compasses, TMC's and nautical instruments. Adjusting, testing and repair of magnetic compasses by certificated compass adjusters.



Manufacture of type approved navigation and data instrumentation for commercial vessels.



Manufacture of military grade instrumentation systems for naval and paramilitary vessels.



ECDIS, ECDIS training and marine training simulators. Distributor for UKHO, Jeppesen, Primar and all official e-chart manufacturers.



Distribution of lighting products including navigation lights, navigation light switch panels and searchlights.



UK sales and service of Yokogawa gyros, autopilots and logs.



**John Lilley & Gillie Ltd.,**  
 Tel: +44(0)191 270 4260  
 Fax: +44(0)191 257 6175  
 E-Mail: sales@jlgmarine.com  
 Web: www.jlgmarine.com

**LILLEY & GILLIE**  
 EQUIPMENT

Directing International Shipping since 1812