

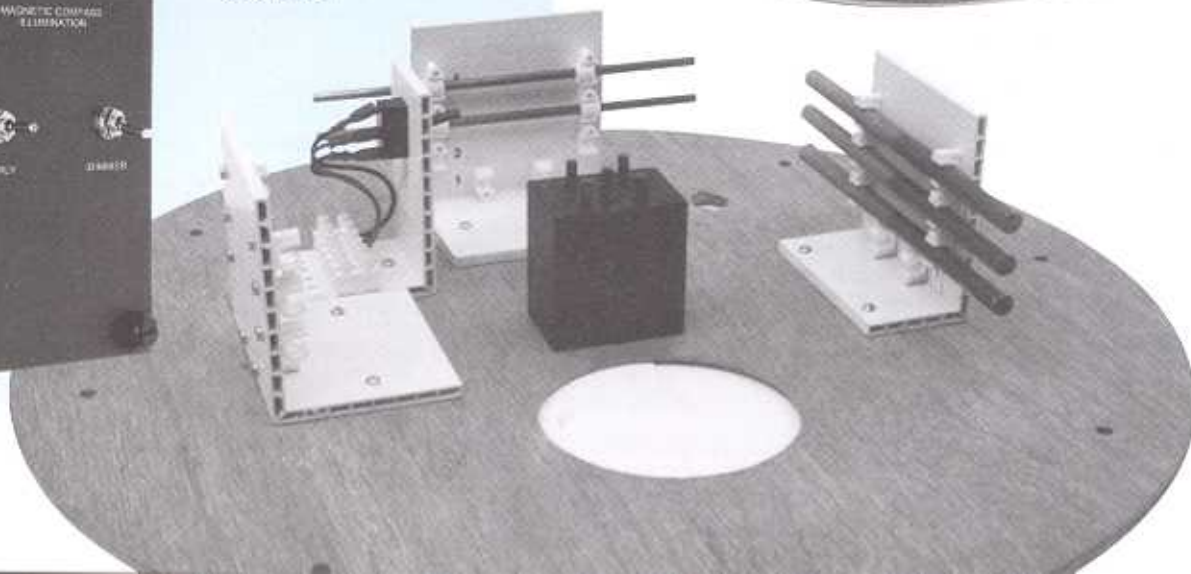
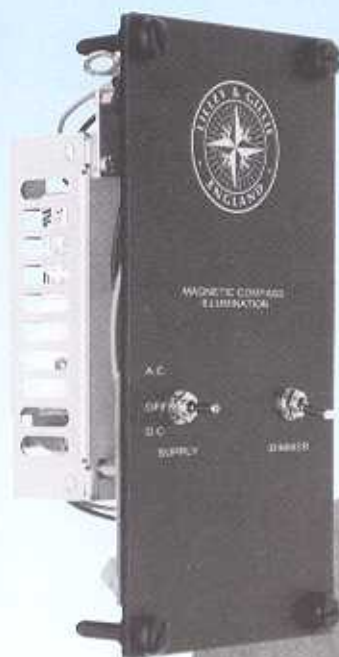
Mk2002 Magnetic Compass Outfit

For Commercial Vessels
under 150grt, Fishing Vessels and
Workboats under 35 metres

Suitable for use with
Lilley & Gillie transmitting
magnetic compass (TMC) equipment
including repeaters, off-course
alarms and outputs to other
navigation equipment including
gyro back up.

Compass Design Features

- Modular design
- Correction facilities to suit different types and sizes of vessels
- LED lighting 24vDC
- Significant weight reduction



Type approved to the European Marine
Equipment Directive (MED) and other
Maritime Authorities



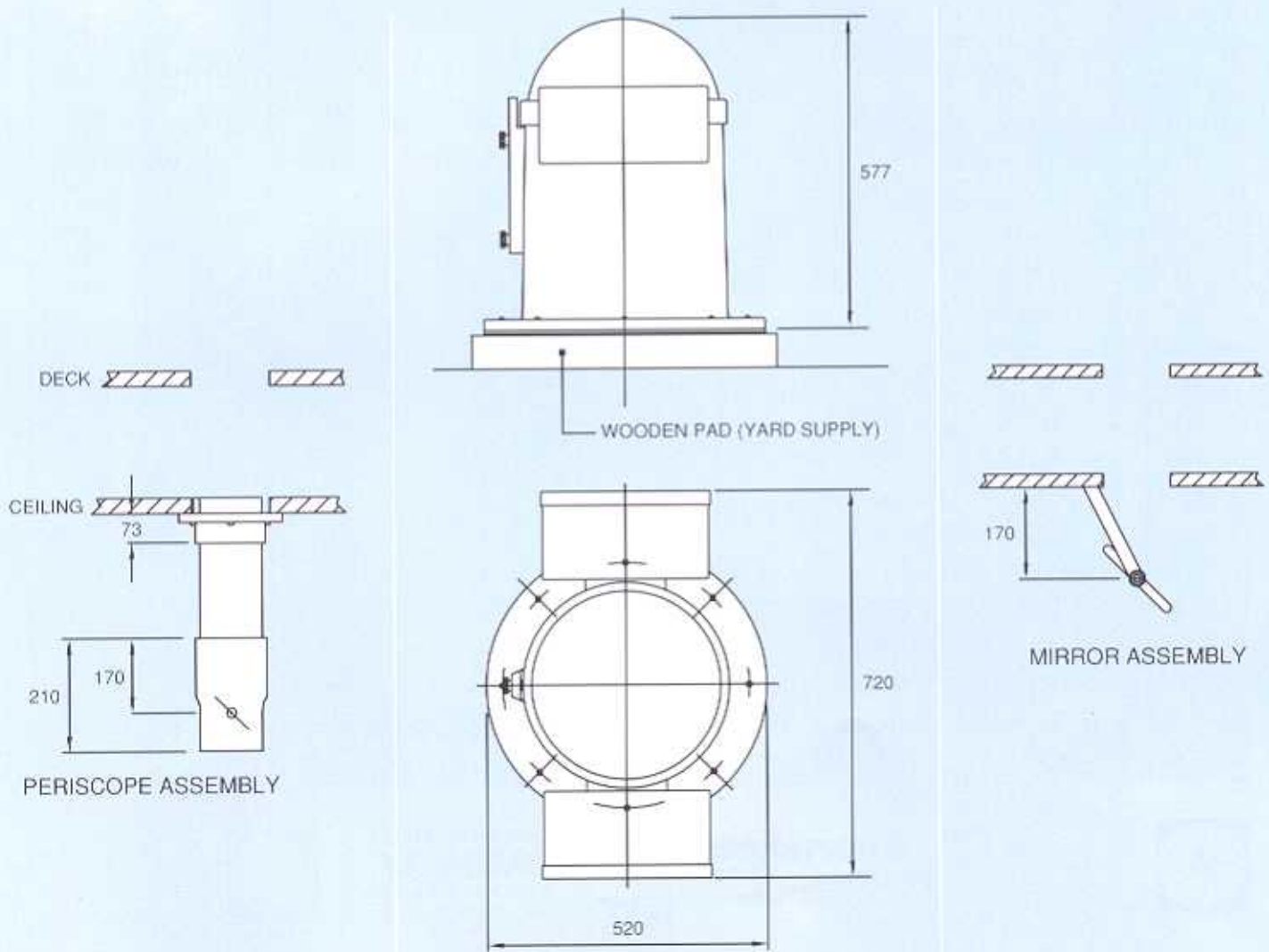
LILLEY & GILLIE

Directing International Shipping since 1812



Mk 2002 Magnetic Compass Outfit Options

Viewing Method	<p>FW9853 Periscope provides the best image, but with narrower viewing angle. Recommended if there is considerable manual steering by the helmsman.</p> <p>FW9070 Mirror, wider viewing angle, lowest cost option.</p> <p>Electronic Repeater with TMC, recommended when the binnacle cannot be placed in a magnetically stable position above the helmsman's position. Additional benefit of requiring only a cable gland through the deck for simpler installation and improved watertightness to the wheelhouse.</p>
Lighting Control	<p>FW9863 Lighting Control Unit has inputs of 220 or 110V AC and 24V DC and outputs 24V DC to the two LED's fitted to the compass. This provides the main and emergency illumination with two level dimmer control. An alternative to the FW9863, acceptable to some administrations, is to connect a switched 24V DC supply directly to the LED cable.</p>
Quadrantal Correctors	<p>FW9856 (Pair). These are required on vessels with a steel hull.</p>
Magnet Plate Assembly	<p>FW9870. All vessels require B, C and H correction. This assembly is installed between the deck and the binnacle and, as well as providing a convenient method of fixing the magnets, ensures that they meet the ISO 2269 requirements.</p>
Internal Dimmer	<p>WD1196, an optional fitting on the FW9870 Magnet Plate and only operable in conjunction with the FW9863 Lighting Control Unit. It enables the illumination dimmer to be controlled from the binnacle position.</p>
Flinders	<p>FW9857, required if the vessel is trading in different latitudes.</p>
Pelorus	<p>A Pelorus with bridge wing brackets is available for those vessels which are required to meet the SOLAS requirement to take bearings.</p>
Cover	<p>W1605 Cover, made of Grey flexible PVC is available for additional protection. Particularly recommended for vessels likely to ship water over the wheelhouse.</p>



The compass outfit is available in Reflector and Non-Reflector versions with the following features.

Material
Reinforced glassfibre binnacle.

Correction
A full set of compensating magnets for B, C and H plus adequate quadrantal corrector and flinders plates.

Periscope
Telescopic with a maximum vertical length of 1.3m (2m if an optional lens is fitted to the binnacle).

Fixings
Rubber base gasket and eight brass woodscrews with washers.

Compass
FW9859, Lilley & Gillie 'OCEAN', Class A, 175mm Reflector Card.

Weights
 Binnacle and hood and gasket 5.9kg
 FW9853 Periscope 3.0kg
 FW9070 Mirror 1.2kg
 FW9859 Compass 8.0kg

FW9863 Control Unit 0.62kg
 FW9870 Magnet Plate 2.0kg
 FW9856 Q.C.'s (Pair) 6.5kg
 FW9857 Flinders 0.5kg

Colour
 Binnacle, Dark Admiralty Grey.
 (Others available)
 Periscope Assembly, Black.
 Lighting Control Unit, Black with white lettering.

Lilley & Gillie MK2002 Magnetic Compass Outfit Options

Mk 2002 Standard Scope of Supply Schedules

Schedule	Scope of Supply	FW9860 Brace	FW9859 Compass	FW9839 LED Assembly	FW9870 Mirror	FW9853 Peri- scope	FW9863 C/Unit	FW9856 (PAIR) QC's	FW9870 Magnet plate	FW9857 Flinders	WD1196 Internal Dimmer
SCH120		Y	Y	Y							
SCH121	Mirror	Y	Y	Y	Y						
SCH122	Periscope	Y	Y	Y		Y					
SCH123	C/Unit	Y	Y	Y			Y				
SCH124	Mirror, C/Unit	Y	Y	Y	Y		Y				
SCH125	Periscope, C/Unit	Y	Y	Y		Y	Y				
SCH126	QC's	Y	Y	Y				Y			
SCH127	Mirror, QC's	Y	Y	Y	Y			Y			
SCH128	Periscope, QC's	Y	Y	Y		Y		Y			
SCH129	Magnet Plate	Y	Y	Y					Y		
SCH130	Mirror, Magnet Plate	Y	Y	Y	Y				Y		
SCH131	Periscope, Magnet Plate	Y	Y	Y		Y			Y		
SCH132	C/Unit, QC's	Y	Y	Y			Y	Y			
SCH133	Mirror, C/Unit, QC's	Y	Y	Y	Y		Y	Y			
SCH134	Periscope, C/Unit, QC's	Y	Y	Y		Y	Y	Y			
SCH135	C/Unit, Magnet Plate	Y	Y	Y			Y		Y		
SCH136	Mirror, C/Unit, Magnet Plate	Y	Y	Y	Y		Y		Y		
SCH137	Periscope, C/Unit, Magnet Plate	Y	Y	Y		Y	Y		Y		
SCH138	QC's, Magnet Plate	Y	Y	Y				Y	Y		
SCH139	Mirror, QC's, Magnet Plate	Y	Y	Y	Y			Y	Y		
SCH140	Periscope, QC's, Magnet Plate	Y	Y	Y		Y		Y	Y		
SCH141	C/Unit, QC's, Magnet Plate	Y	Y	Y			Y	Y	Y		
SCH142	Mirror, C/Unit, QC's, Magnet Plate	Y	Y	Y	Y		Y	Y	Y		
SCH143	Periscope, C/Unit, QC's, Magnet Plate	Y	Y	Y		Y	Y	Y	Y		
SCH144	C/Unit, QC's, Magnet Plate, Flinders, Int. Dimmer	Y	Y	Y			Y	Y	Y	Y	Y
SCH145	Mirror, C/Unit, QC's, Magnet Plate, Flinders, Int Dimmer	Y	Y	Y	Y		Y	Y	Y	Y	Y
SCH146	Periscope, C/Unit, QC's, Magnet Plate, Flinders, Int Dimmer	Y	Y	Y		Y	Y	Y	Y	Y	Y



Manufacturer of magnetic compasses, TMC's and nautical instruments. Adjusting, testing and repair of magnetic compasses by certificated compass adjusters.



Manufacturer of type approved navigation and identification instruments for commercial vessels.



Manufacture of military grade instrumentation systems for naval and warlike maritime vessels.



ECDS and electronic chart systems



International Admiralty Chart Agent. Supply and updating services for EA, US, British and numerous other publishers' charts, publications and books including electronic charts (Kaster and S57) and digitised products.



UK sales of special and Aves software including emergency control, planned maintenance, quality document management and others.



UK sales and service of Yokogawa gyros, autopilots and logs.



Distribution of lighting products including navigation lights, navigation light switch panels and searchlights.



John Lilley & Gillie Ltd.,
Clive Street, North Shields, Tyne & Wear, NE29 6LF, England.
Tel: +44(0)191 257 2217
Fax: +44(0)191 257 1521 Telex: 53600
E-Mail: sales@lilleyandgillie.co.uk
Web: www.lilleyandgillie.co.uk

LILLEY & GILLIE

Directing International Shipping since 1812